



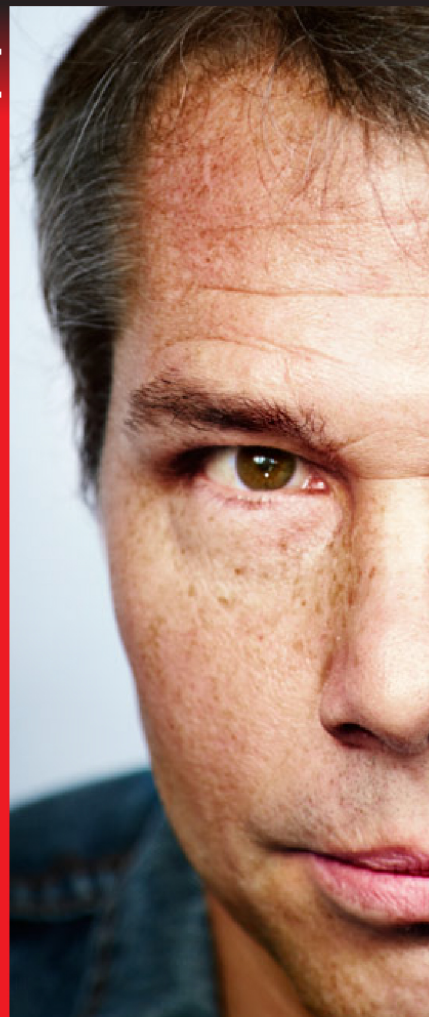
Barbara Kruger's artwork always has a black & white photograph as the foundation of the artwork while having a constant font (Futura-Bold). Using only 3 colors (black, red & white) to line out simple & few words which channel a message through both the photograph and text displayed on it.

The outsides of the photographs may or may not have border, either having borders on the top & bottom or on the sides. Words are always enclosed in a colored boundary box, the words are then structured in order or chaotic on the photograph which gives her artworks different kinds of balance and unity. The subject of her artwork's messages range from commercialism, politics and often deal with the body itself.

Graphic Design Compare and Contrast

Shepard Fairey's artwork has the base of it be an illustration of a photograph as the foundation, following that with intricate patterns and designs surrounding it everywhere. The colors used on his illustrations and designs range from simple blacks and whites to primary colors which create tones through the use of color, space and gradient in the artwork.

Very few to no words go into his illustrations in displaying messages through the overall artwork and utilizes different fonts in his many artwork. His artwork draws the eyes everywhere as the symmetry and balance of the work create harmony. The messages found in his artwork speak of current politics, peace & justice and even society's subjugation.

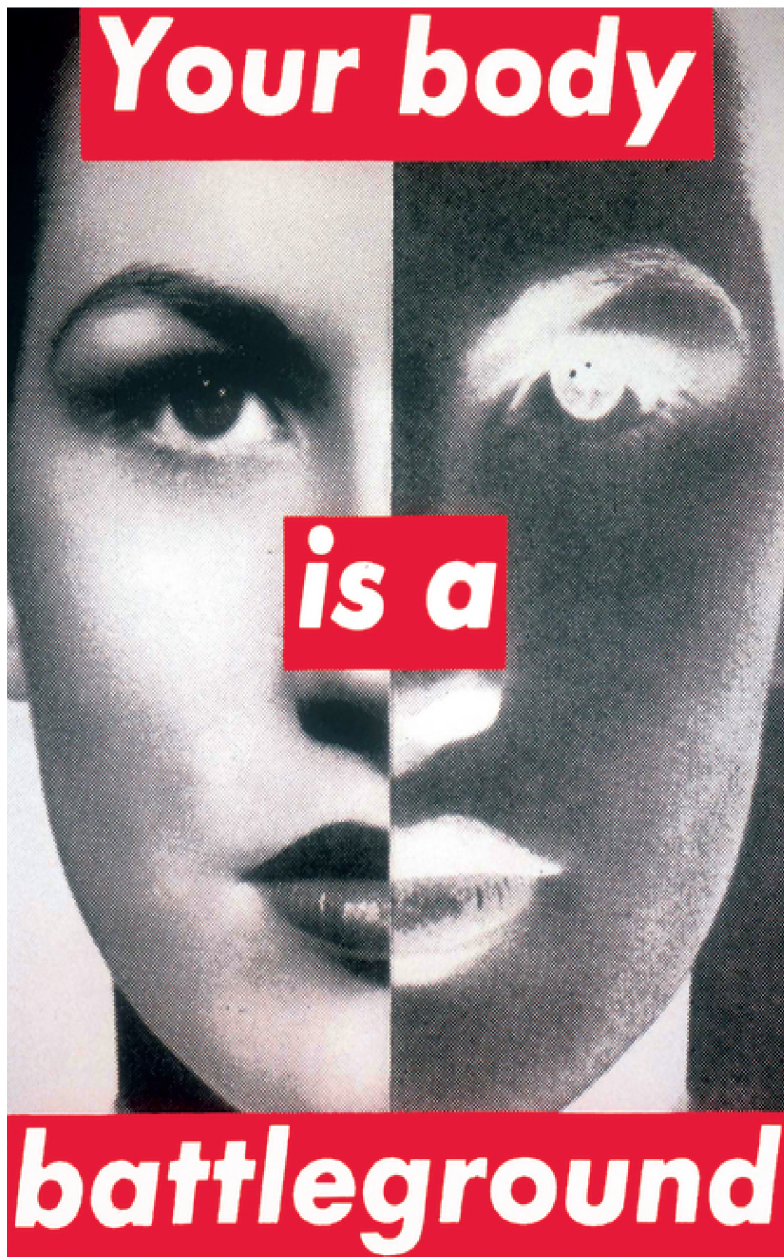


Compare

Barbara's **Your Body is a Battlefield** and Shepard's **Obey** use the image of a face as the base of the artwork and the color black and white in creating value thru light & shadow. Both artist use the Futura-Bold Oblique Type and only 3 colors in their artwork.

Contrast

Your Body is a Battlefield has white text with a red boundary box behind the text and inverts half of the face, giving the symmetrical image a asymmetricalness in value. **Obey** only uses one word in the entire artwork, seperated from the image of the face. The space created from the use of color, created a face with such defined features.

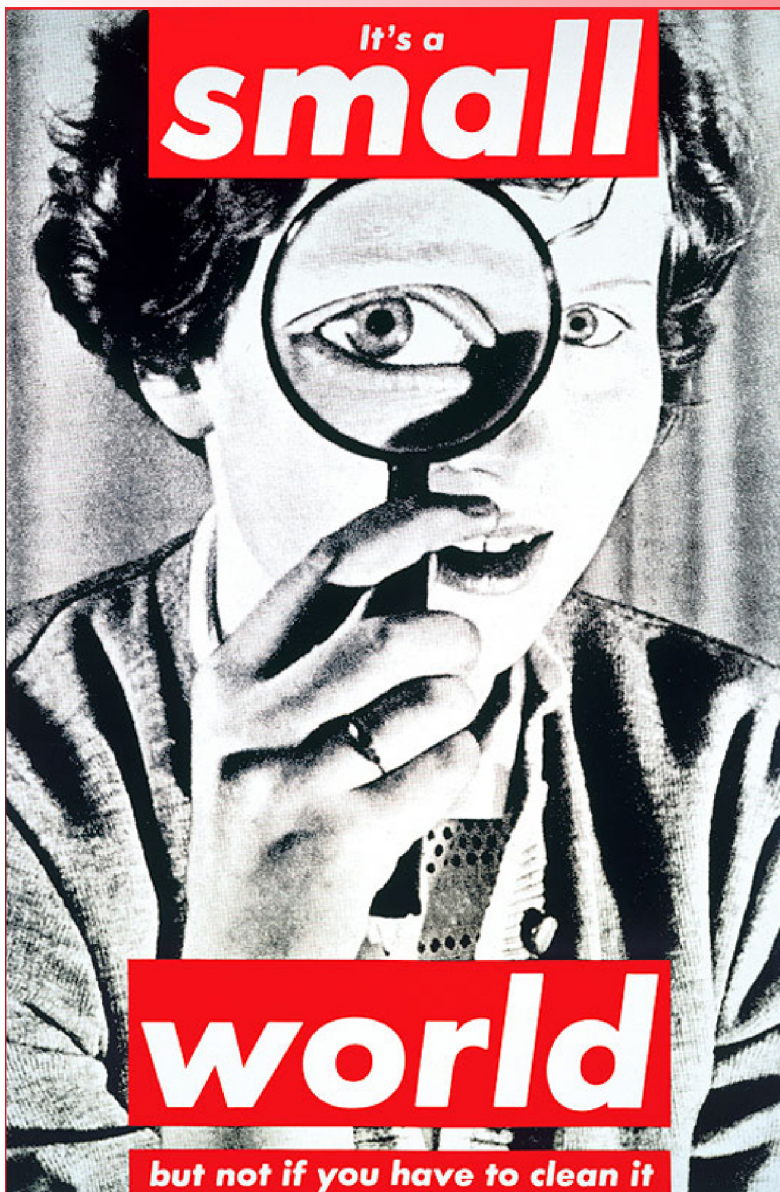


Compare

Barbara's **It's a Small World** and Shepard's **Hope** once again use the image of two people. Both artworks share in the use of whites and reds and have a background.

Contrast

It's a Small World keep up with the artist use of black & white photography and a text in white with a red boundary box around it. The image appears to have been brighten up with a higher hue of light and the 3 boxes text is centered and each line is equal in width. **Hope** uses more than 3 colors in the illustration and have different colors in shading the person and the background which create light and shadow and also uses hatching in the shading of the face. It also incorporates a political logo from 2008 presidential election.



Compare

Barbara's **Your Comfort is my Silence** and Shepard's **Make Art Not War** use the face of a person in the center of the artwork in black and white. Both artists use only 3 colors in their entire artwork. The text in both artworks changes colors after each word.

Contrast

Your Comfort is my Silence changes things up with using two different colored bounding boxes with 2 of them being red and at an angle inside the other. The face also has a hand in front of the image and the face has a lot of shadow covering it up. **Make Art Not War** uses a design pattern behind and around the illustration and it also shows a previous artwork inside of this artwork. The text wraps around the design and illustration, in the shape of a circle and the use of red is only applied to the background.

