

Character Sheet

Develop a character sheet for your protagonist.

A character sheet is used to define the way a character should be drawn.

Expressions

Draw the character's face/head and include at least 6 different expressions ex: happy, sad, excited, angry, surprised, scared, hungry, crying, laughing

Poses

Draw the character's body and include at least 4 standing poses - Front, Back, Profile and 3/4 Pose

Action Poses

Draw the character's body in action and include at least 4 action poses - ex: walking, running, squatting, laying down, jumping, flying,

Color Palette

Decide on a color palette to be used with your character. Use HEX, RGB or CMYK numbers to specify your colors

Character Sheet Handout

Fill out the information on the Character Sheet Handout to further develop your character.



COMPLETE Character Sheet

Put all the above requirements into ONE DOCUMENT

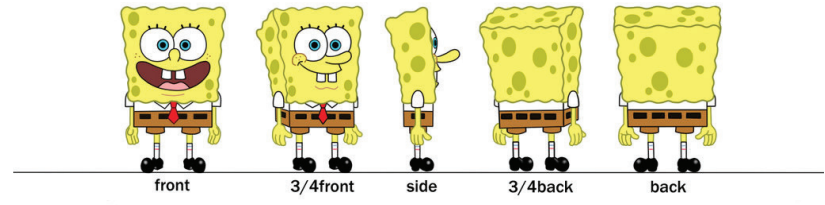
11 inches x 17 inches at 300dpi

Save as Lastname_Character Sheet



RONAN SKIPPER

Full Name: Ronan Skipper
Rank: Scullery boy (Later, Captain)
Birthday: October 11th (Libra)
Weight: 100lbs
Personality: Outgoing, charismatic, and quick to think and act in a difficult situation. Very trusting and accepting towards others, he often lets his happy-go-lucky, naive demeanor get the better of his common sense.
Backstory: Abandoned by his mother, Ro has lived at The Gate and worked as a scullery boy for Captain Flynn as long as he can remember. Having grown up surrounded by seafaring travelers and their fantastical tales, he longs for an adventurous life outside the tavern, but is too afraid to seek one by himself. He looks up to and sometimes looks after his best friend of four years, Seb, the chef's assistant, for confidence and advice. He also admires the youngest bar maid Remy, and often daydreams about sailing away from The Gate with her.



ATTITUDE POSES IN WALKS/examples:

